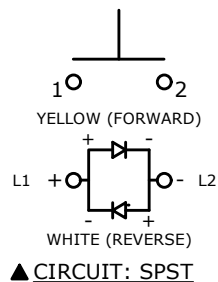
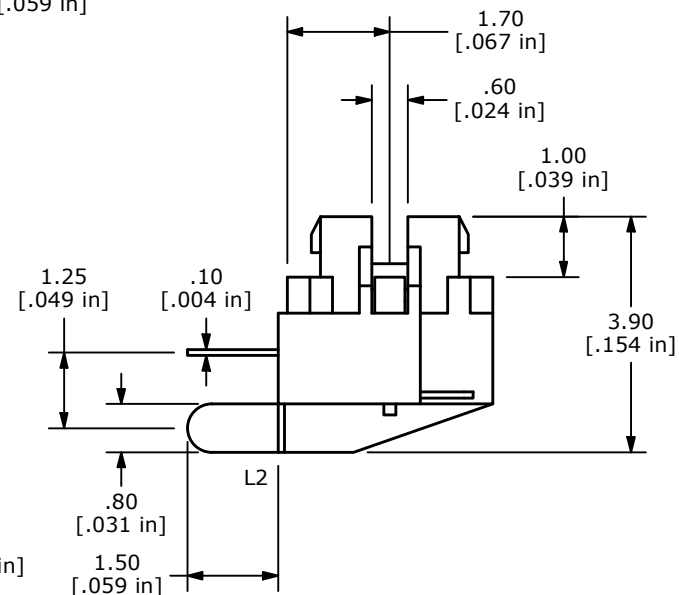
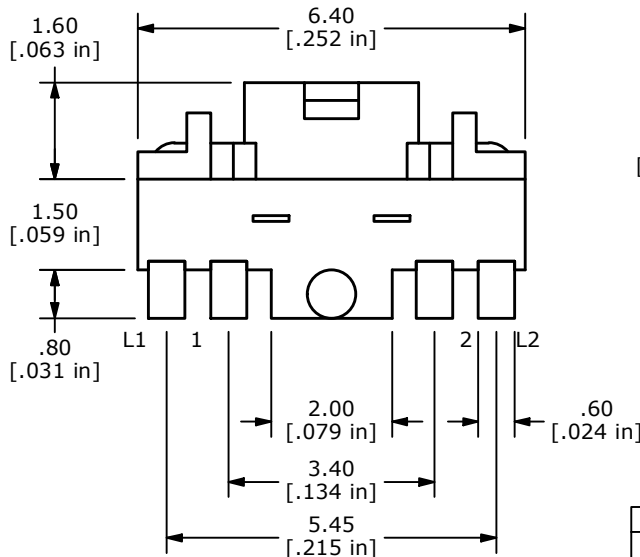
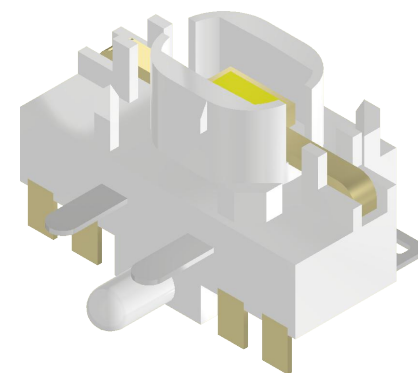
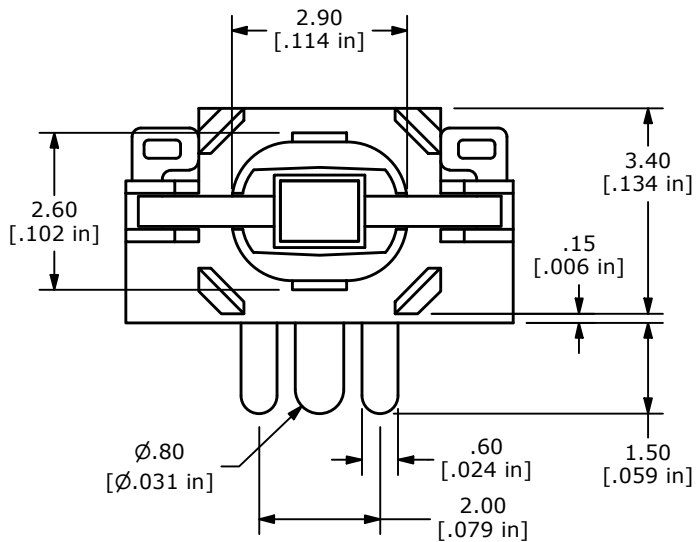


RECOMMENDED PCB LAYOUT



NOTES:

1. ALL DIMENSIONS IN MM [INCH]
2. GENERAL TOLERANCE: X.X = ± 0.4
X.XX = ± 0.25
3. RATING: 12VDC, 50mA MAX.
4. CONTACT RESISTANCE: 500mΩ MAX.
5. INSULATION RESISTANCE: 100MΩ MIN. @ 100VDC
6. TRAVEL: 0.2 ± 0.1 mm
7. DIELECTRIC STRENGTH: 250V AC FOR 1 MIN.
- ▲ 8. OPERATING FORCE: 160 ± 50gf
9. OPERATING TEMPERATURE: -40°C TO 85°C
10. OPERATING LIFE: 100,000 CYCLES.
11. PACKAGING: TAPE & REEL, 1400 PIECES PER REEL
12. ▲ DENOTES CRITICAL PARAMETER
- ▲ 13. CONTACT MATERIAL: SILVER



LED SPECS	UNITS	WHITE	YELLOW
FORWARD CURRENT	mA	20	20
FORWARD VOLTAGE	V	3.30 typ.	2.00 typ.
LUMINOUS INTENSITY	mcd	600 typ.	180 typ.
PEAK WAVELENGTH	nm	N/A	590

REV	ECO NO	DESCRIPTION	DATE	BY
A	ECO-102186	RELEASE	08/25/23	JS

		OBJECT ID 100125509
TITLE TL3275AF160YWQ		

SCALE 8:1	DATE 8/22/2023	DR JS	DWG B327512	REV A
--------------	-------------------	----------	----------------	----------