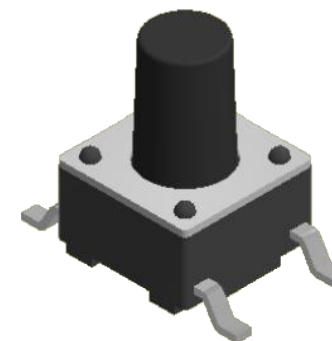
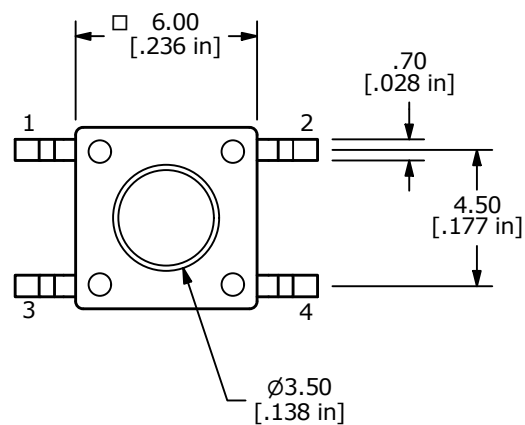
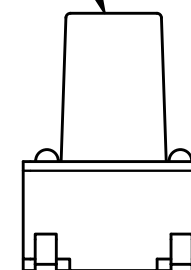
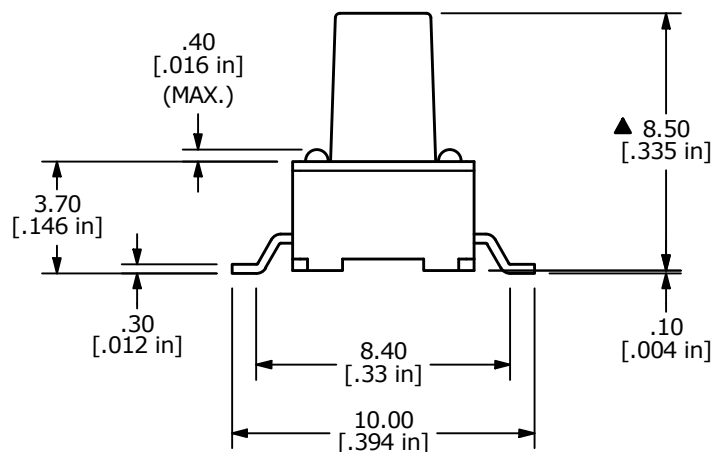


NOTES:

1. ALL DIMENSIONS IN MM
2. GENERAL TOLERANCE: X.X = ±0.4
X.XX = ±0.25
3. TERM. NOS. FOR REFERENCE ONLY.
4. RATING: 12VDC, 50mA
- ▲ 5. OPERATING FORCE: 160 ±50gf
6. TRAVEL: 0.25mm +0.2/-0.1mm
7. CONTACT RESISTANCE: 100 MILLI OHMS MAX. (INITIAL)
8. MECHANICAL/ELECTRICAL LIFE: 100,000 CYCLES.
- ▲ 9. CONTACT MATERIAL: SILVER
10. PACKAGING: TAPE AND REEL/650 PER REEL.
11. ▲ DENOTES CRITICAL PARAMETER
12. OPERATING TEMPERATURE: -40°C to 85°C



ACTUATOR
COLOR: BLACK



REV	ECO NO	DESCRIPTION	DATE	BY
E	ECO-101416	update operating temp.	11/17/22	MW



OBJECT ID
000017900

TITLE TL3301PF160QG				
SCALE 4:1	DATE 11/28/2006	DR TN	DWG P010593	REV E