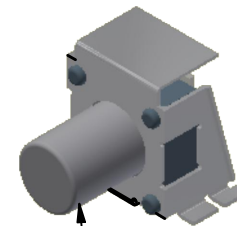
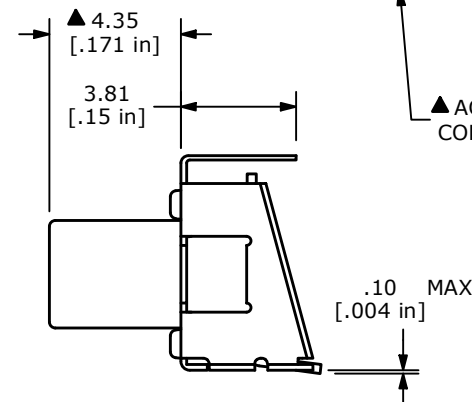
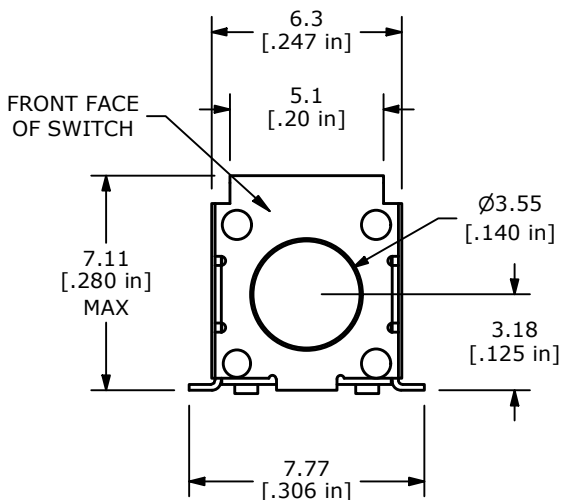
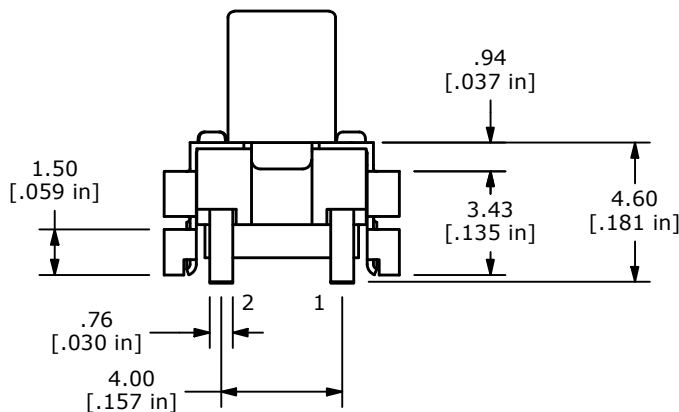


▲ SPST CIRCUIT

- NOTES:
1. ALL DIMENSIONS IN MM [INCH]
  2. GENERAL TOLERANCE: X.X=±0.4  
X.XX=±0.20
  3. CONTACT RATING: 50mA @ 12VDC
  4. CONTACT RESISTANCE: 100mΩ MAX.
  5. INSULATION RESISTANCE: 10MΩ MIN @ 500VDC.
  - ▲ 6. OPERATING FORCE: 185 ± 50gf
  7. TRAVEL: 0.15 mm MINIMUM
  8. OPERATING TEMPERATURE: -25°C TO + 70°C
  - ▲ 9. OPERATING LIFE: 200,000 CYCLES
  10. CONTACTS: SILVER
  11. ▲ DENOTES CRITICAL PARAMETERS
  12. PACKAGE: TAPE AND REEL



▲ ACTUATOR COLOR: GRAY



REV	ECO NO	DESCRIPTION	DATE	BY
A	ECO-102322	RELEASE	11/03/23	MW



OBJECT ID  
100126007

TITLE TL3360DF185AKQ				
SCALE 4:1	DATE 10/23/2023	DR JS	DWG N330010	REV A

THE INFORMATION CONTAINED IN THIS DOCUMENT IS PROPRIETARY TO E-SWITCH AND IS NOT TO BE COPIED OR TRANSFERRED