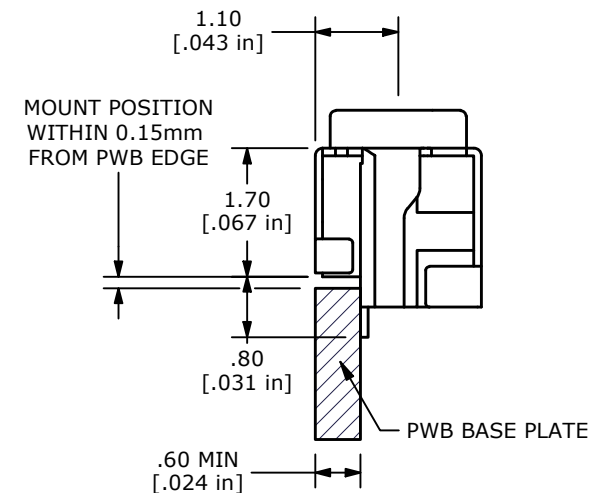
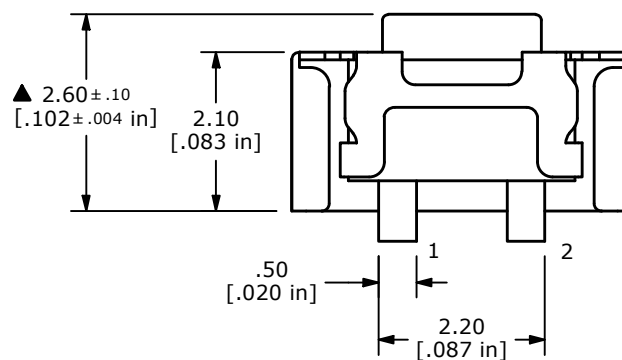
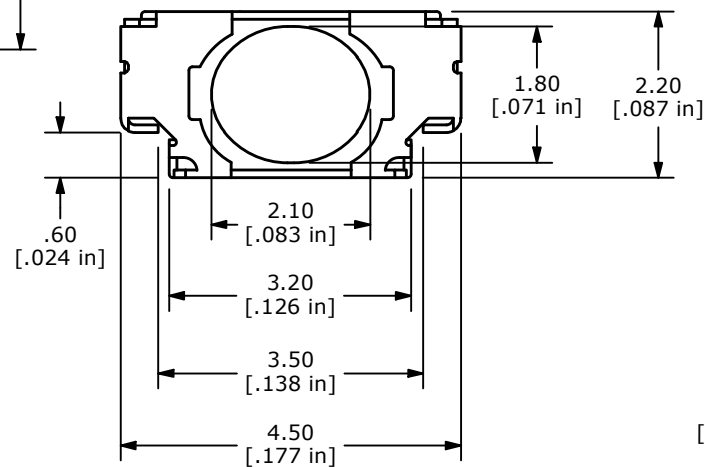
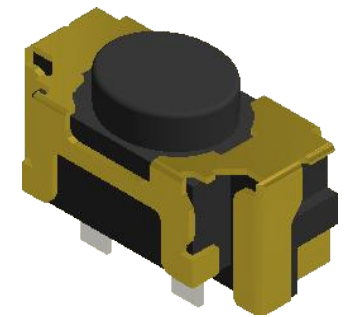
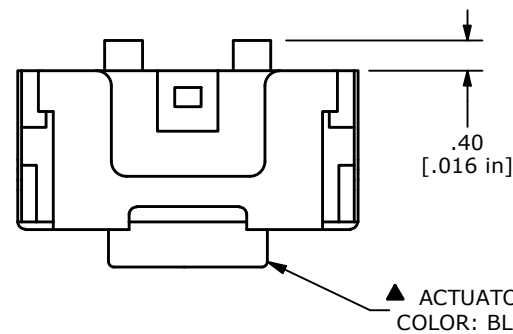


NOTES:

1. ALL DIMENSIONS IN MM
2. GENERAL TOLERANCE: X.X=±0.4
X.XX=±0.25
3. TERM. NUMBERS FOR REF. ONLY.
4. RATING: 50mA @12VDC
- ▲ 5. OPERATING FORCE: 220 ± 70 gf
6. TRAVEL: 0.15 +/-0.1mm
7. BOUNCE: 10msec. MAX.
8. CONTACT RESISTANCE: 500 mΩ MAX.
9. INSULATION RESISTANCE: 100MΩ MIN @100VDC
10. DIELECTRIC STRENGTH: 250VAC for 1 minute
11. ELECTRICAL LIFE: 600,000 CYCLES
- ▲ 12. CONTACT MATERIAL: SILVER
13. PACKAGING: TAPE AND REEL
14. ▲ DENOTES CRITICAL PARAMETER
15. OPERATING TEMP: -30°C TO 85°C



E-SWITCH®

OBJECT ID
100100685

A	24822	NEW RELEASE	3/26/21	JM
REV	PCR NO	DESCRIPTION	DATE	BY

THE INFORMATION CONTAINED IN THIS DOCUMENT IS PROPRIETARY TO
E-SWITCH AND IS NOT TO BE COPIED OR TRANSFERRED

TITLE TL4115AF220Q				
SCALE	DATE	DR	DWG	REV
10:1	3/26/2021	JM	P180001	A