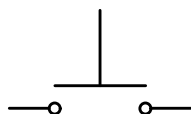
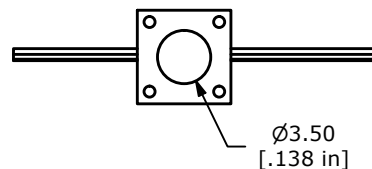


PCB LAYOUT

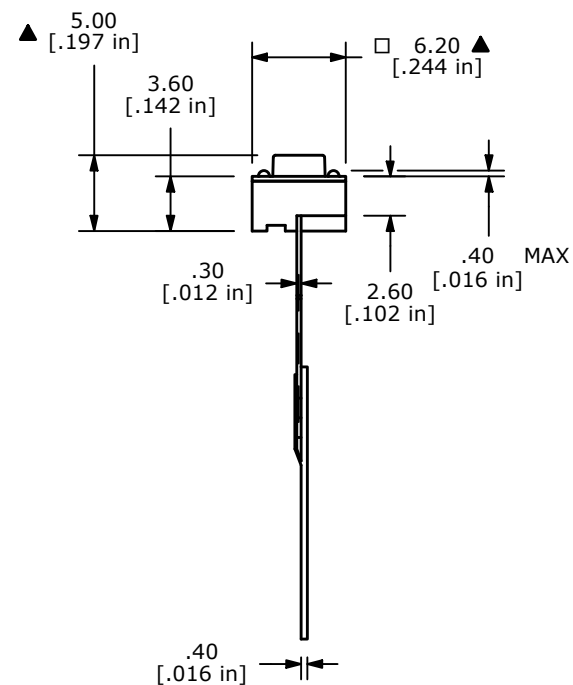
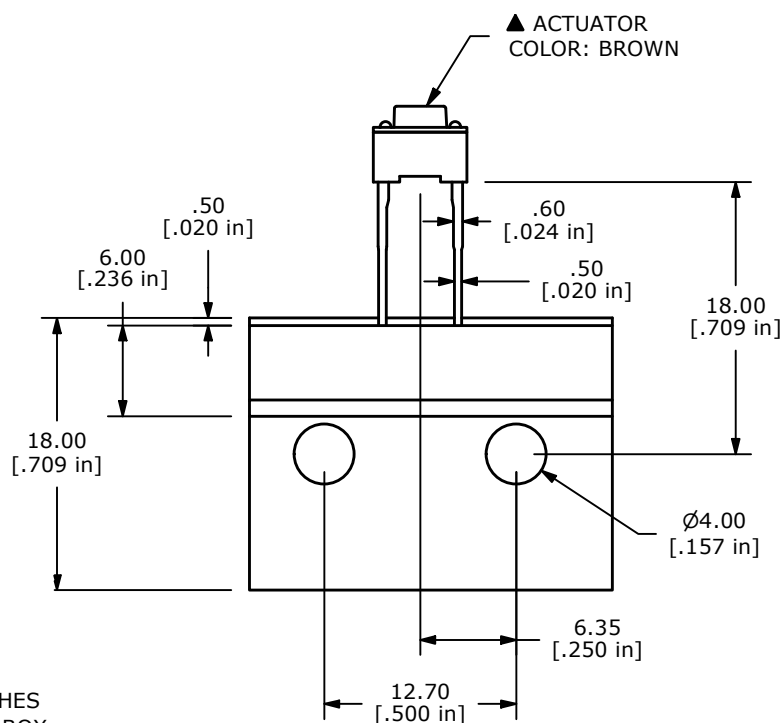


CIRCUIT: SPST



NOTES:

1. ALL DIMENSIONS IN MM [INCH]
2. GENERAL TOLERANCE: X.X=±0.4mm
X.XX=±0.25mm
3. CONTACT RATING: 50mA @ 12VDC
4. CONTACT MATERIAL: SILVER
- ▲ 5. OPERATING FORCE: 100±30gf
6. TRAVEL: 0.25+0.2/-0.1mm
7. CONTACT RESISTANCE: 100mΩ MAX.
8. ELECTRICAL LIFE: 100,000 CYCLES
9. PACKAGING: CARRIER IS FOLDED EVERY 25 PITCHES
(24) SWITCHES PER FOLD. 1,000 SWITCHES PER BOX.
10. OPERATING TEMP: -40°C TO 85°C
11. ▲ DENOTES CRITICAL PARAMETERS.



| REV | ECO NO | DESCRIPTION | DATE | BY | E-SWITCH® | | | | OBJECT ID |
|-----|------------|------------------------------------|----------|----|------------------|-----------|----|---------|-----------|
| G | ECO-102541 | PRINT UPDATED TO CURRENT STANDARDS | 05/01/24 | JS | TITLE TL59AF100Q | | | | 000017874 |
| | | | | | SCALE | DATE | DR | DWG | REV |
| | | | | | 2:1 | 1/18/2007 | TN | P010555 | G |

THE INFORMATION CONTAINED IN THIS DOCUMENT IS PROPRIETARY TO
E-SWITCH AND IS NOT TO BE COPIED OR TRANSFERRED