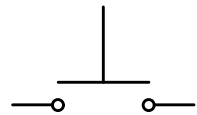
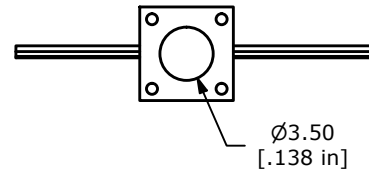


5.00
[.197 in]

Ø1.00
[.039 in]

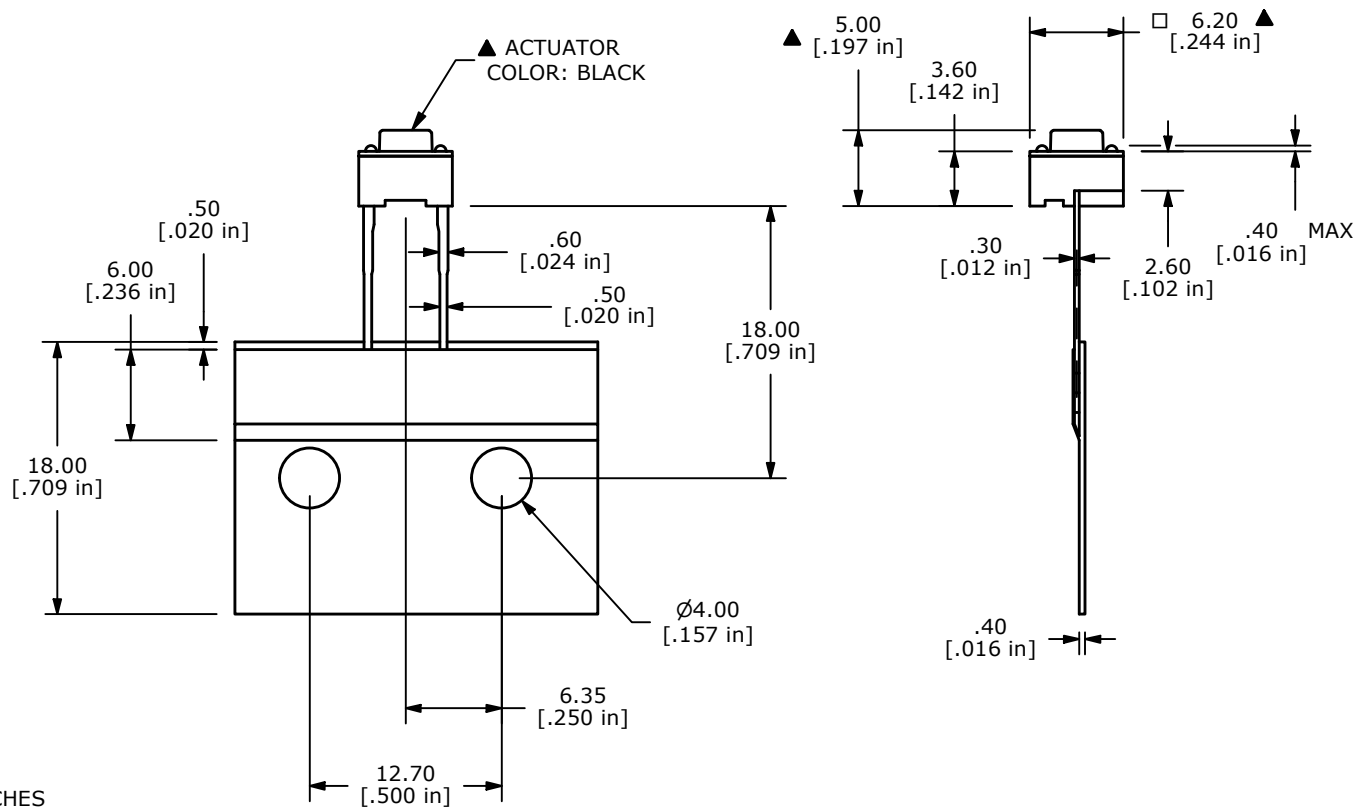
PCB LAYOUT



SCHEMATIC

NOTES:

1. ALL DIMENSIONS IN MM [INCH]
2. GENERAL TOLERANCE: X.X=±0.4mm
X.XX=±0.25mm
3. CONTACT RATING: 50mA @ 12VDC
4. CONTACT MATERIAL: SILVER
- ▲ 5. OPERATING FORCE: 160±50gf
6. TRAVEL: 0.25+0.2/-0.1mm
7. CONTACT RESISTANCE: 100mΩ MAX.
8. ELECTRICAL LIFE: 100,000 CYCLES
9. PACKAGING: CARRIER IS FOLDED EVERY 25 PITCHES
(24) SWITCHES PER FOLD.
10. OPERATING TEMP: -40°C TO 85°C
11. ▲ DENOTES CRITICAL PARAMETERS.



REV	ECO NO	DESCRIPTION	DATE	BY	E-SWITCH®				OBJECT ID
C	ECO-102541	PRINT UPDATED TO CURRENT STANDARDS	05/01/24	JS	TITLE TL59AF160Q				000017880
					SCALE	DATE	DR	DWG	REV
					2:1	1/18/2007	TN	P010562	C

THE INFORMATION CONTAINED IN THIS DOCUMENT IS PROPRIETARY TO
E-SWITCH AND IS NOT TO BE COPIED OR TRANSFERRED