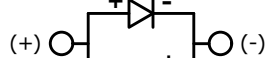


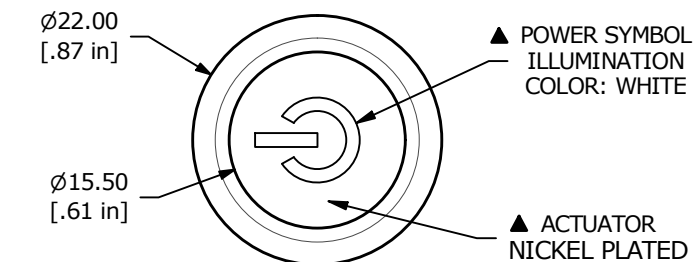
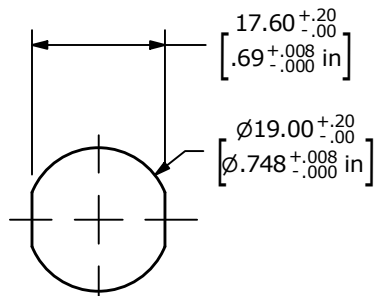
WHITE (FORWARD)



WHITE (REVERSE)

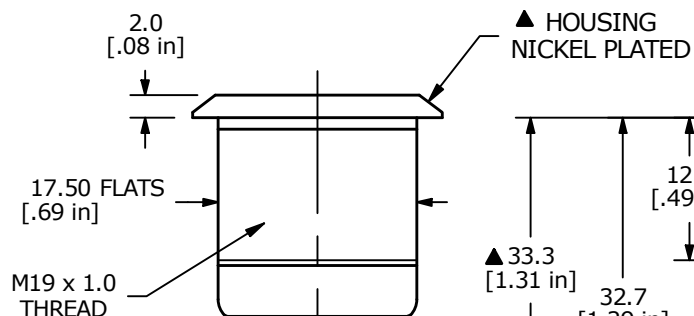
**SCHEMATIC
ON-ON
SPDT ILLUMINATED**

PANEL CUT-OUT
PANEL THICKNESS 1-10mm



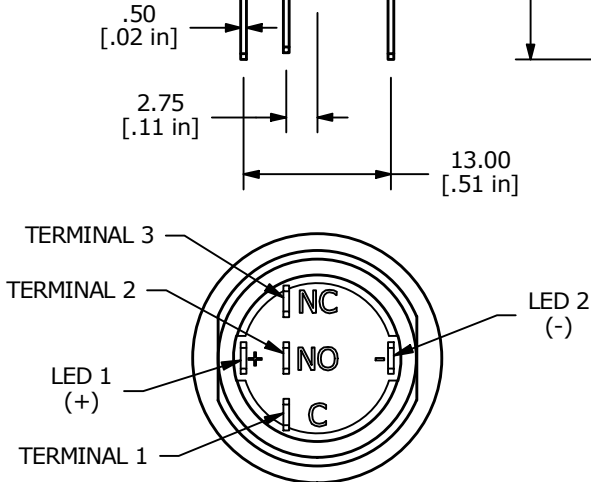
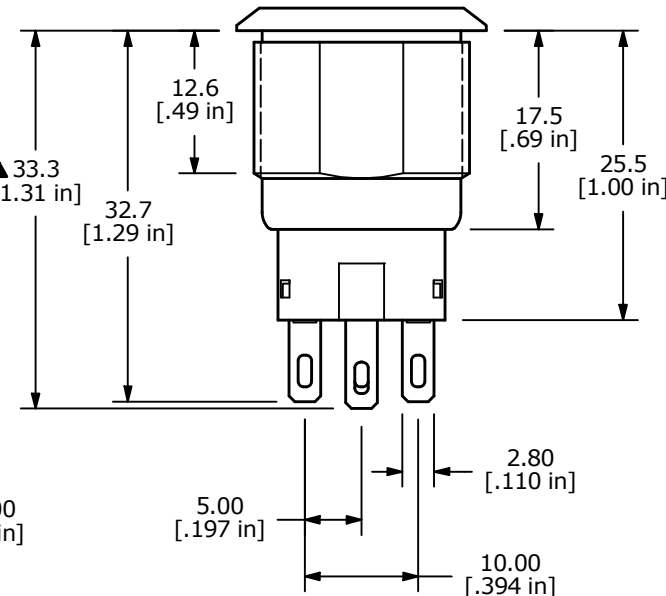
▲ POWER SYMBOL
ILLUMINATION
COLOR: WHITE

▲ ACTUATOR
NICKEL PLATED



M19 x 1.0
THREAD

▲ HOUSING
NICKEL PLATED



NOTE:

1. ALL DIMENSIONS IN MM [INCH]
2. GENERAL TOLERANCE: X.X = ±0.4
X.XX = ±0.25
3. TERMINAL NUMBERS FOR REF ONLY
- ▲ 4. CONTACT MATERIAL: SILVER
5. RATING: 3A 250 VAC cUL
6. ELECTRIC LIFE: 50,000 MAKE-AND-BREAK CYCLES
AT FULL LOAD.
7. MECHANICAL LIFE: 500,000 CYCLES.
8. INSULATION RESISTANCE: 1,000 MΩ @ 500VDC MIN.
9. DIELECTRIC STRENGTH: 2,000 VAC MIN. FOR 1 MINUTE
10. CONTACT RESISTANCE: 50mΩ MAX. @ 1A 12VDC
11. OPERATING TEMP.: -20°C to 55°C
12. ▲ DENOTES CRITICAL PARAMETER.
- ▲ 13. LAMP VOLTAGE: 20mA 24V
14. TRAVEL: 3.2mm
15. ACTUATION FORCE: 2.5 ± 1.0 N
16. MOUNTING NUT TORQUE: 5-14 Nm
17. INGRESS PROTECTION: IP67
18. HARDWARE SUPPLIED: O-RING AND HEXNUT

REV	ECO NO	DESCRIPTION	DATE	BY
B	ECO-100359	UPDATE PANEL CUTOUT	12/09/21	JS



OBJECT ID
000026133

TITLE ULV4F23NN505				
SCALE 3:2	DATE 10/15/2018	DR MW	DWG T940133	REV B