

GREEN (FORWARD)



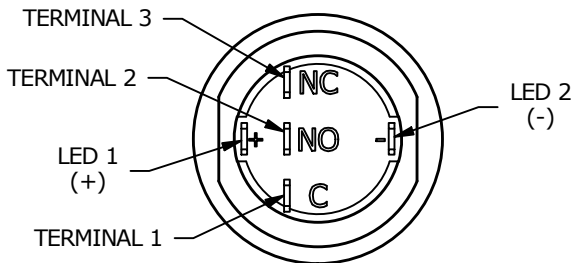
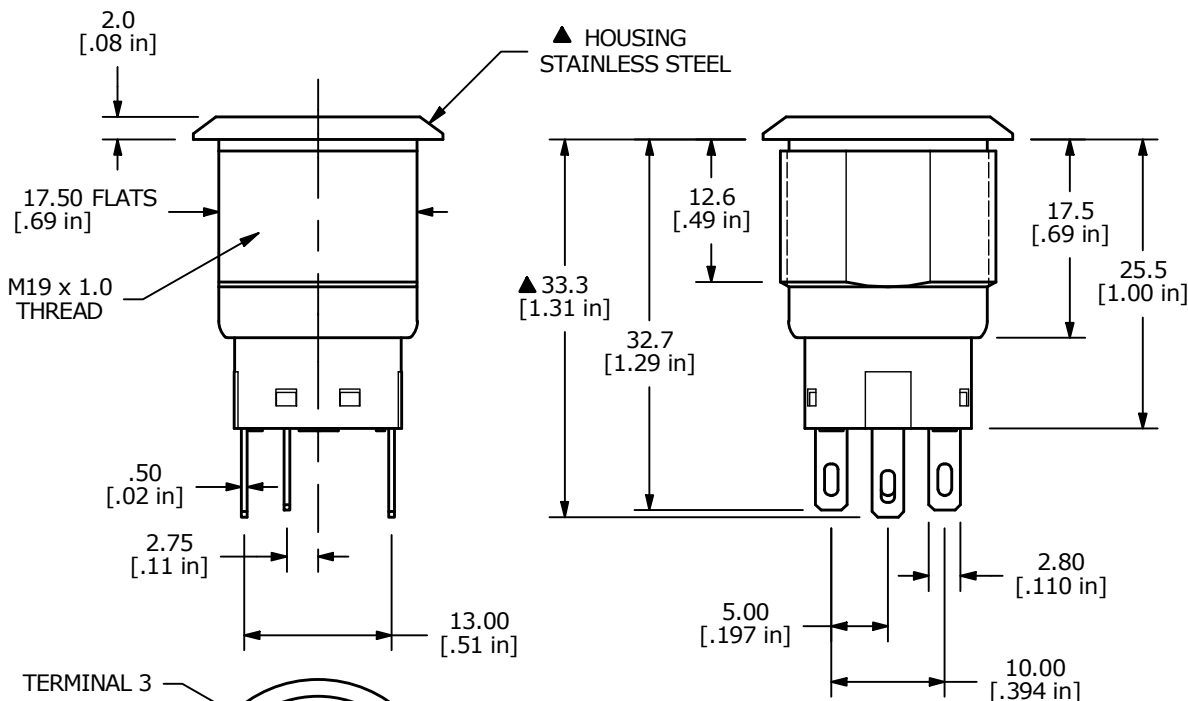
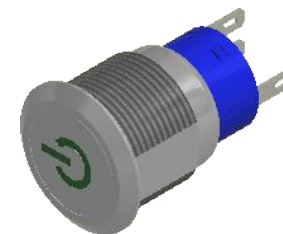
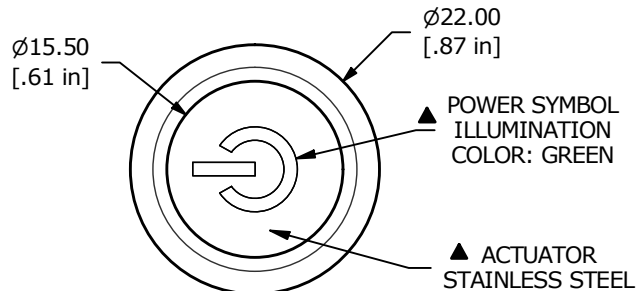
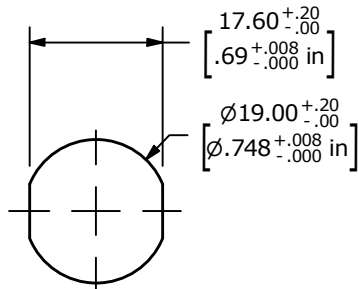
GREEN (REVERSE)

SCHEMATIC

ON-ON

SPDT ILLUMINATED

PANEL CUT-OUT  
PANEL THICKNESS 1-10mm



NOTE:

1. ALL DIMENSIONS IN MM [INCH]
2. GENERAL TOLERANCE: X.X = ±0.4  
X.XX = ±0.25
3. TERMINAL NUMBERS FOR REF ONLY
- ▲ 4. CONTACT MATERIAL: SILVER
5. RATING: 3A 250 VAC cUL
6. ELECTRIC LIFE: 50,000 MAKE-AND-BREAK CYCLES AT FULL LOAD
7. MECHANICAL LIFE: 500,000 CYCLES
8. INSULATION RESISTANCE: 1,000 MΩ @ 500VDC MIN.
9. DIELECTRIC STRENGTH: 2,000 VAC MIN. FOR 1 MINUTE
10. CONTACT RESISTANCE: 50mΩ MAX. @ 1A 12VDC
11. OPERATING TEMP.: -20°C to 55°C
12. ▲ DENOTES CRITICAL PARAMETER
- ▲ 13. LAMP VOLTAGE: 20mA 110V
14. TRAVEL: 3.2mm
15. ACTUATION FORCE: 2.5 ± 1.0 N
16. MOUNTING NUT TORQUE: 5-14 Nm
17. INGRESS PROTECTION: IP67, IK10
18. HARDWARE SUPPLIED: O-RING AND HEXNUT

| REV | ECO NO     | DESCRIPTION         | DATE     | BY |
|-----|------------|---------------------|----------|----|
| B   | ECO-100352 | UPDATE PANEL CUTOUT | 12/09/21 | JS |



OBJECT ID  
000026118

|                       |                   |          |                |          |
|-----------------------|-------------------|----------|----------------|----------|
| TITLE<br>ULV4F23SS536 |                   |          |                |          |
| SCALE<br>3:2          | DATE<br>3/23/2018 | DR<br>MW | DWG<br>T940118 | REV<br>B |