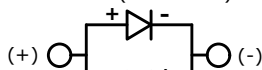


GREEN (FORWARD)



GREEN (REVERSE)

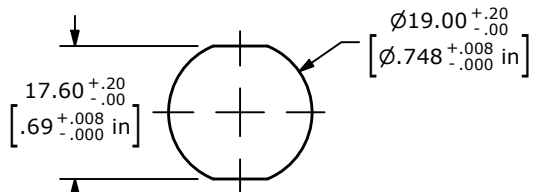
SCHEMATIC

ON-ON

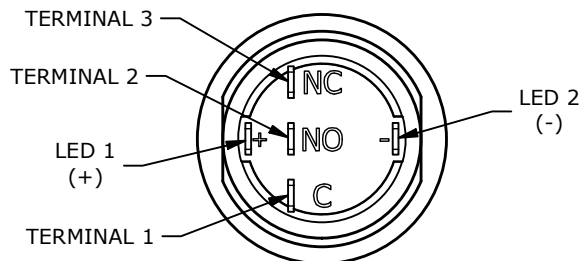
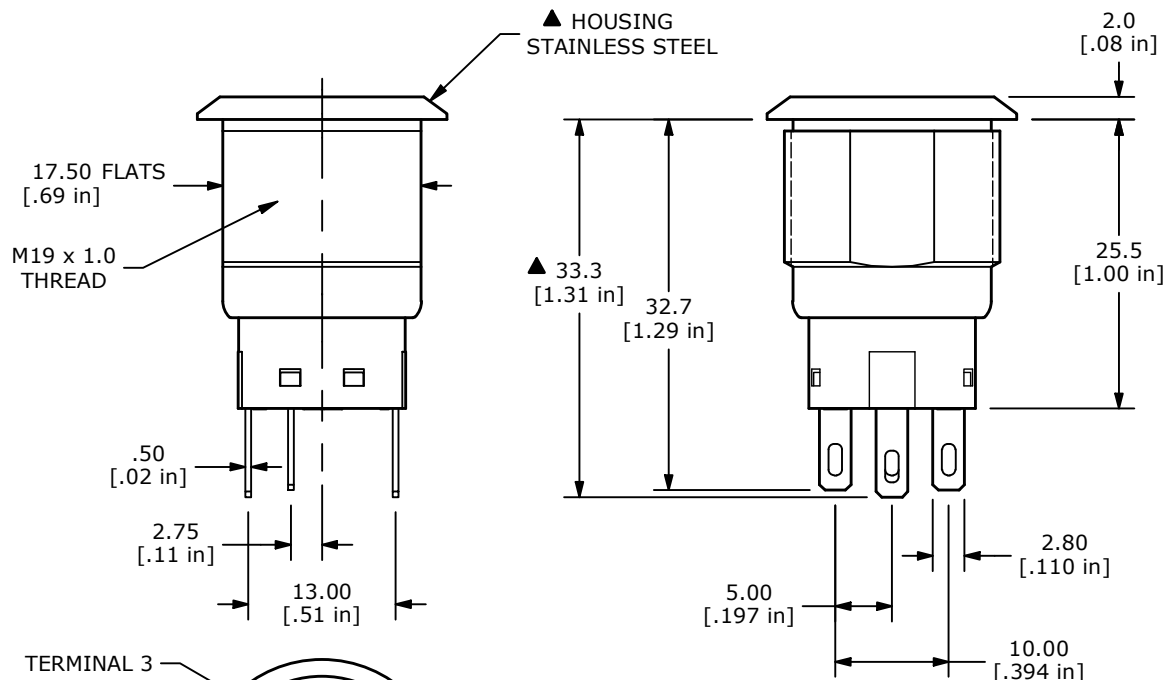
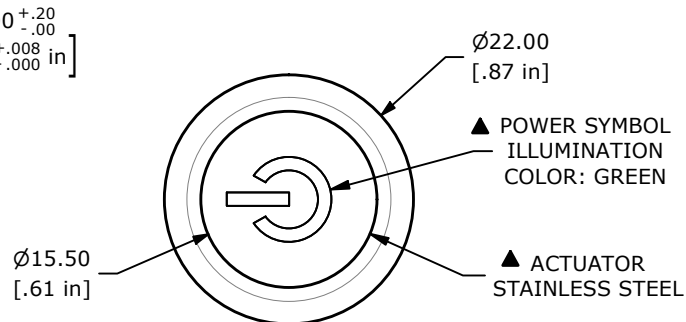
SPDT ILLUMINATED

NOTE:

1. ALL DIMENSIONS IN MM [INCH]
2. GENERAL TOLERANCE: X.X = ±0.4  
X.XX = ±0.25
3. TERMINAL NUMBERS FOR REF ONLY
- ▲ 4. CONTACT MATERIAL: GOLD
5. RATING: 3A 250 VAC cUL
6. ELECTRIC LIFE: 50,000 MAKE-AND-BREAK CYCLES AT FULL LOAD
7. MECHANICAL LIFE: 500,000 CYCLES
8. INSULATION RESISTANCE: 1,000 MΩ @ 500VDC MIN.
9. DIELECTRIC STRENGTH: 2,000 VAC MIN. FOR 1 MINUTE
10. CONTACT RESISTANCE: 50mΩ MAX. @ 1A 12VDC
11. OPERATING TEMP.: -20°C to 55°C
12. ▲ DENOTES CRITICAL PARAMETER
- ▲ 13. LAMP VOLTAGE: 20mA 6V
14. TRAVEL: 3.2mm
15. ACTUATION FORCE: 2.5 ± 1.0 N
16. MOUNTING NUT TORQUE: 5-14 Nm
17. INGRESS PROTECTION: IP67, IK10
18. HARDWARE SUPPLIED: O-RING AND HEXNUT



PANEL CUT-OUT  
PANEL THICKNESS 1-10mm



REV	ECO NO	DESCRIPTION	DATE	BY
A	ECO-102585	Release	03/08/24	MW



OBJECT ID  
100126966

TITLE ULV4F23SSG533				
SCALE 3:2	DATE 3/7/2024	DR MW	DWG T940174	REV A