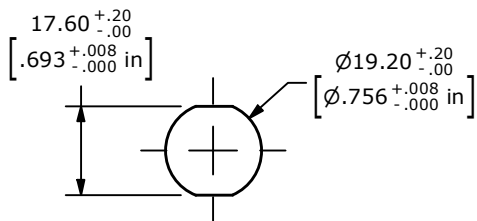


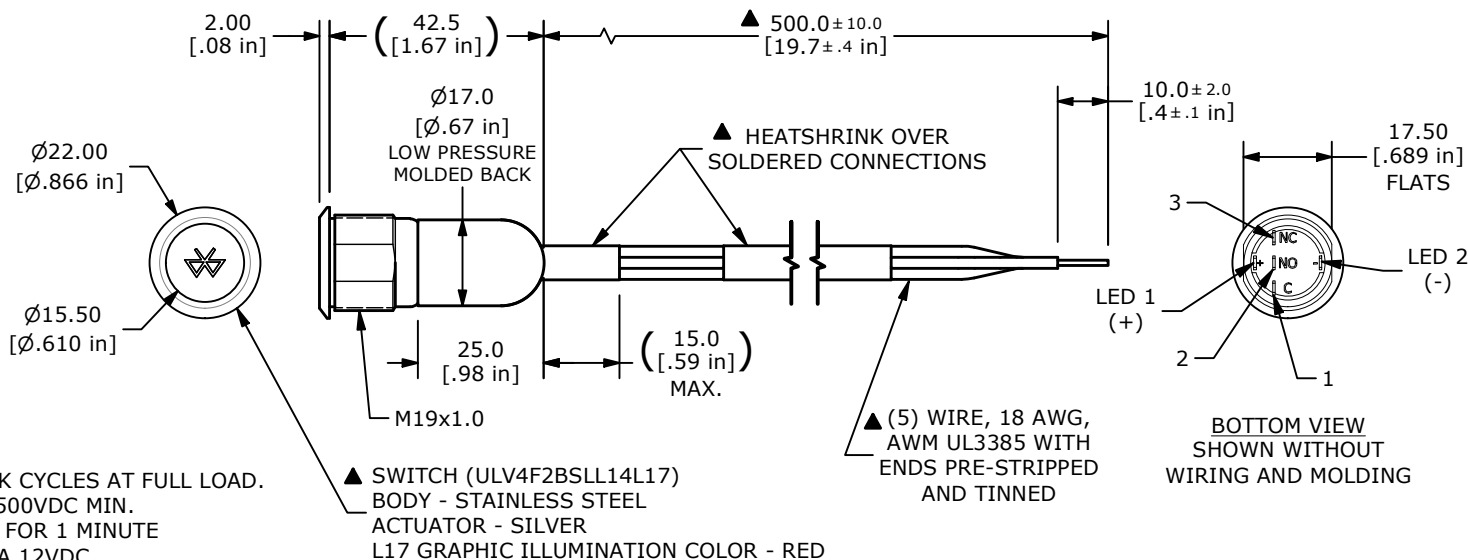
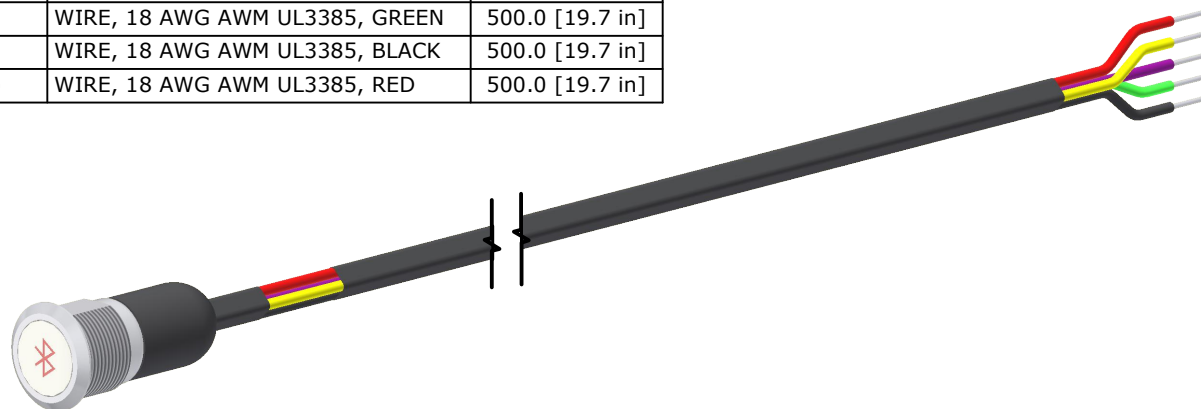
SCHEMATIC  
ON - (ON) - SPDT ILLUMINATED  
( ) DENOTES MOMENTARY



RECOMMENDED PANEL CUTOUT  
MAX. PANEL THICKNESS 10mm

- NOTES:
1. DIMENSIONS IN MM [INCH]
  2. GENERAL TOLERANCE: X.X = ±0.4 X.XX = ±0.25
  3. TERMINAL NUMBERS FOR REF ONLY
  4. CONTACT MATERIAL: SILVER
  5. RATING: 3A 250 VAC cUL
  6. OPERATING TEMP.: -20°C to 55°C
  7. LAMP VOLTAGE: 20mA 12V
  8. TRAVEL: 3.2mm
  9. ACTUATION FORCE: 5.5 ±1.0 N
  10. MOUNTING NUT TORQUE: 5-14 Nm
  11. INGRESS PROTECTION: IP67
  12. MECHANICAL LIFE: 1,000,000 CYCLES.
  13. ELECTRIC LIFE: 50,000 MAKE-AND-BREAK CYCLES AT FULL LOAD.
  14. INSULATION RESISTANCE: 1,000 MΩ @ 500VDC MIN.
  15. DIELECTRIC STRENGTH: 2,000 VAC MIN. FOR 1 MINUTE
  16. CONTACT RESISTANCE: 50mΩ MAX. @ 1A 12VDC
  17. ▲ DENOTES CRITICAL PARAMETER.
  18. ALL MATERIAL SHALL BE ROHS COMPLIANT
  - ▲ 19. SUPPLIED HARDWARE: O-RING and HEXNUT
  - ▲ 20. USE P/N's DESIGNATED OR ENGINEERING APPROVED EQUIVALENTS.

SWITCH	WIRE	LENGTH
SW1-1	WIRE, 18 AWG AWM UL3385, YELLOW	500.0 [19.7 in]
SW1-2	WIRE, 18 AWG AWM UL3385, PURPLE	500.0 [19.7 in]
SW1-3	WIRE, 18 AWG AWM UL3385, GREEN	500.0 [19.7 in]
SW1- (-)	WIRE, 18 AWG AWM UL3385, BLACK	500.0 [19.7 in]
SW1- (+)	WIRE, 18 AWG AWM UL3385, RED	500.0 [19.7 in]



REV	ECO NO	DESCRIPTION	DATE	BY
A	ECO-102205	Release	08/31/23	MW

OBJECT ID  
100125556

**E-SWITCH®**

TITLE **ULV4FMBSLL14L17**

SCALE 2:3	DATE 8/30/2023	DR MW	DWG T940925	REV A
--------------	-------------------	----------	----------------	----------