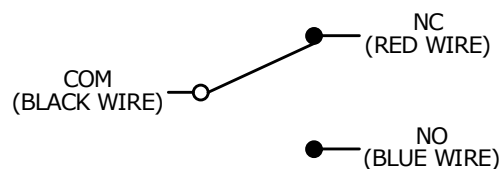


O.P. (MM)	F.P. (MM)
10.8±0.8	12.0 MAX

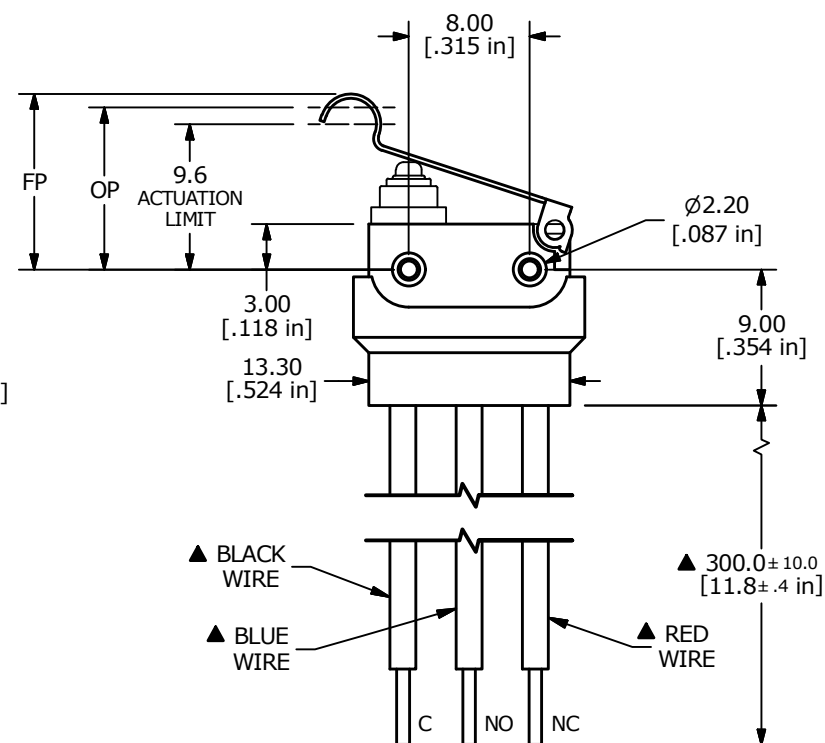
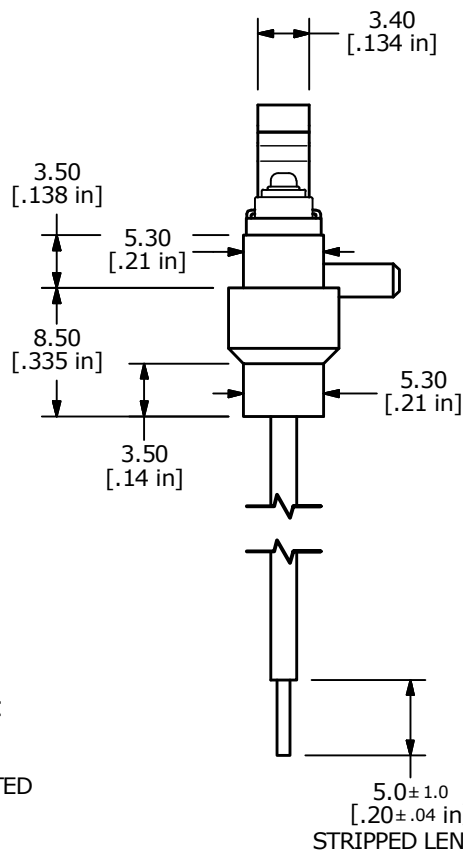
O.P. = OPERATING POINT
F.P. = FREE-POSITION



▲ CIRCUIT: SPDT

NOTES:

1. ALL DIMENSIONS IN MM [INCH]
2. GENERAL TOLERANCE: X.X = ± 0.4
X.XX = ± 0.25
3. RATING: 0.1A @ 125VAC; 2A @ 12VDC;
0.5A @ 42VDC; 1A @ 24VDC;
UL, CUL APPROVED
- ▲ 4. OPERATING FORCE: 70 ± 30 GRAMS.
5. OPERATING TEMP: -25°C to 85°C
6. ELECTRICAL LIFE: 10,000 CYCLES MIN.
7. MECHANICAL LIFE: 1,000,000 CYCLES TYP.
8. INSULATION RESISTANCE: >100 MEGA-OHMS @ 500VDC
9. DIELECTRIC STRENGTH: 600VAC
10. CONTACT RESISTANCE: 100 MILLI-OHMS MAX (INITIAL).
11. WIRES ARE 22AWG, STRANDED, UL1007, COLOR AS NOTED
12. 2011/65/EU (ROHS) COMPLIANT.
13. ▲ DENOTES CRITICAL PARAMETER.
14. ACTUATION BELOW THE 9.6mm ACTUATION LIMIT MAY CAUSE DAMAGE TO THE INTERNAL CONTACTS.



TITLE WS0850102F070WA

A	23891	New Release	5/13/19	MW
REV	PCR NO	DESCRIPTION	DATE	BY

THE INFORMATION CONTAINED IN THIS DOCUMENT IS PROPRIETARY
TO E-SWITCH AND IS NOT TO BE COPIED OR TRANSFERRED

SCALE	DATE	DR	DWG	REV
2:1	5/13/2019	MW	Q930009	A