

# KAG SERIES DIP SWITCH

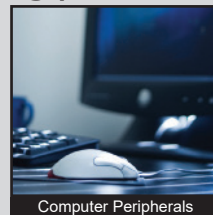
ANTI-VANDAL SWITCHES  
DETECTOR SWITCHES  
DIP SWITCHES  
KEYLOCK SWITCHES  
NAVIGATION SWITCHES  
PUSHBUTTON SWITCHES  
ROCKER SWITCHES  
ROTARY SWITCHES  
SLIDE SWITCHES  
SNAP ACTION SWITCHES  
TACTILE SWITCHES  
TOGGLE SWITCHES  
CAP OPTIONS



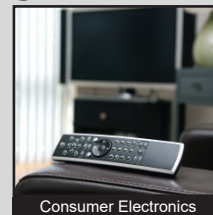
## APPLICATIONS / MARKETS



Audio / Visual



Computer Peripherals



Consumer Electronics



Instrumentation



Telecommunication



Medical Equipment

**RoHS**

## SPECIFICATIONS

**Electrical Rating:** 100mA @ 50VDC Non-Switching  
25mA @ 24VDC Switching

**Life Expectancy:** 1,000 Cycles each circuit

**Contact Resistance:** 50mΩ Max.

**Insulation Resistance:** 100 MΩ Min. at 500VDC

**Dielectric Strength:** 500VAC for 1 min.

**Operating Temperature:** -40°C to 105°C

**Storage Temperature:** -40°C to 105°C

**Travel:** 0.9mm in each direction

**Contact Arrangement:** SPST each position

## FEATURES & BENEFITS

- Gullwing (SMT) termination
- Tube or Tape & Reel packaging
- Extended or recessed actuator; Top tape seal option
- Low profile
- 1, 2, 3, 4, 6, 8, or 10 positions
- Gold contacts
- Switches are supplied with all poles in "OFF" position

## PART NUMBER CONFIGURATOR

Series	No. of Positions	Actuator	Termination	Contact Material	Packaging
<input type="text" value="KAG"/>	<input type="text" value="01"/> <input type="text" value="02"/> <input type="text" value="03"/> <input type="text" value="04"/> <input type="text" value="06"/> <input type="text" value="08"/> <input type="text" value="10"/>	<input type="text" value="L"/> <input type="text" value="S"/> <input type="text" value="T"/>	<input type="text" value="G"/>	<input type="text" value="G"/>	<input type="text" value="T"/> <input type="text" value="R"/>
	01 - 1 position 02 - 2 positions 03 - 3 positions 04 - 4 positions 06 - 6 positions 08 - 8 positions 10 - 10 positions	L - Extended S - Recessed without top tape seal T - Recessed with top tape seal	G - Gullwing	G - Gold	T - Tube R - Tape & Reel

*Specifications subject to change without notice 4.21.2026*



**E-SWITCH®**

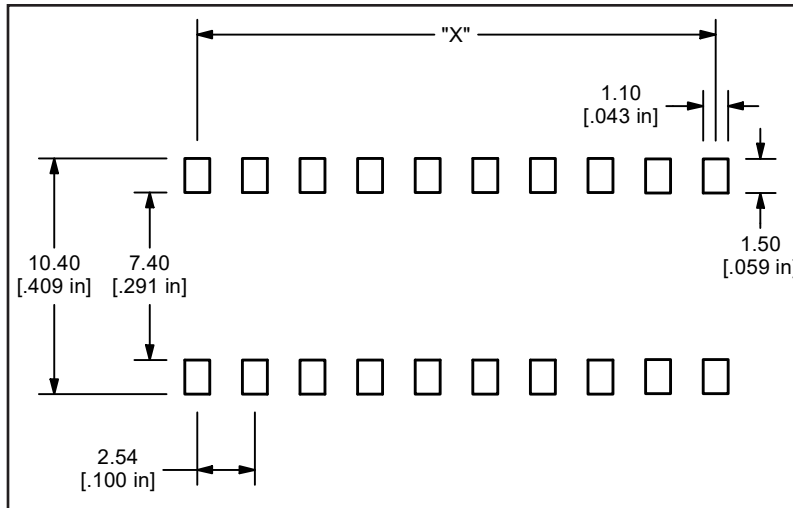
www.e-switch.com

800.867.2717

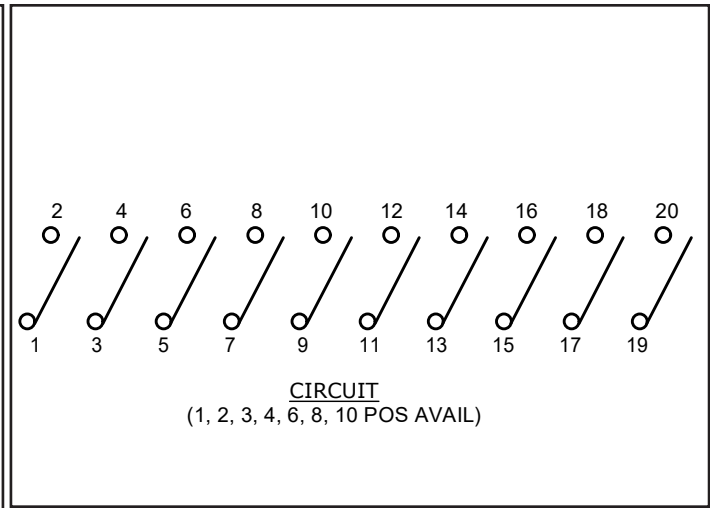
1

# KAG SERIES DIP SWITCH

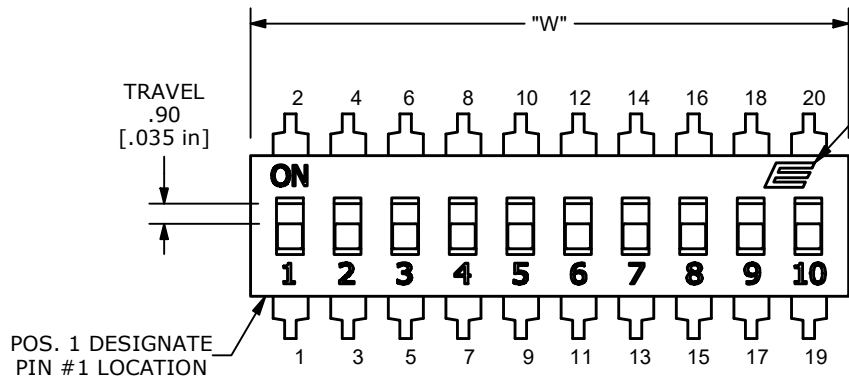
## BODY DIMENSIONS



**RECOMMENDED PCB LAYOUT**



**SCHEMATIC**

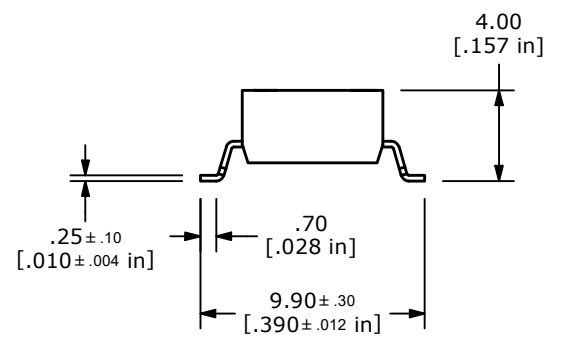
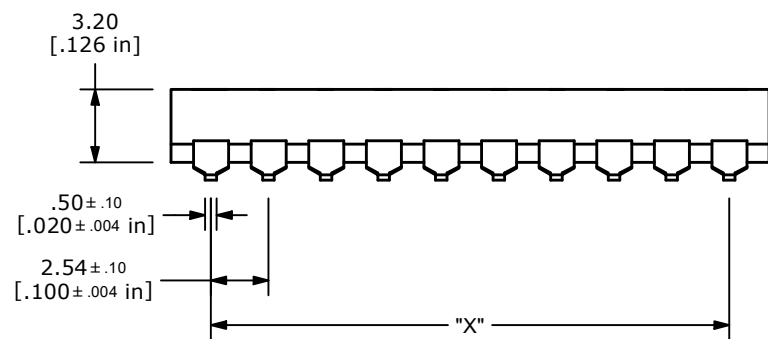


E-SWITCH LOGO

6.20 <sup>+ .40</sup> <sub>- .00</sub> [.244 <sup>+ .016</sup> <sub>- .000</sub> in]

NO. OF POS	DIM W	DIM X
1	3.54	N/A
2	6.08	2.54
3	8.62	5.08
4	11.16	7.62
6	16.24	12.70
8	21.32	17.78
10	26.40	22.86

POS. 1 DESIGNATE PIN #1 LOCATION



**E-SWITCH®**

www.e-switch.com

800.867.2717