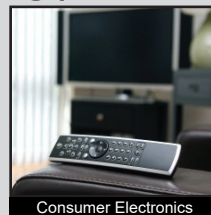


TD4700 SERIES DETECTOR SWITCH

ANTI-VANDAL SWITCHES
 DETECTOR SWITCHES
 DIP SWITCHES
 KEYLOCK SWITCHES
 NAVIGATION SWITCHES
 PUSHBUTTON SWITCHES
 ROCKER SWITCHES
 ROTARY SWITCHES
 SLIDE SWITCHES
 SNAP ACTION SWITCHES
 TACTILE SWITCHES
 TOGGLE SWITCHES
 CAP OPTIONS



APPLICATIONS / MARKETS



RoHS

SPECIFICATIONS

Electrical Rating: 1mA, 5VDC
Life Expectancy: 100,000 Cycles
Contact Resistance: 2Ω Max.Initial
Insulation Resistance: 100MΩ Min. @ 100VDC
Dielectric Strength: 100VAC for 1 minute
Operating Temperature: -40°C to 85°C
Storage Temperature: -40°C to 85°C
Travel: 2.2mm
Contact Arrangement: SPST
Actuation Force: 50 grams max

FEATURES & BENEFITS

- Ultraminiature
- Ultra-low profile
- Guiding post offers easy orientation

PART NUMBER CONFIGURATOR

Series	Mounting Bosses	Plating
<input type="text" value="T"/> <input type="text" value="D"/> <input type="text" value="4"/> <input type="text" value="7"/> <input type="text" value="0"/> <input type="text" value="0"/>	<input type="text" value="A"/>	<input type="text" value="Q"/>
TD4700	A - Without Bosses B - With Bosses	Q - Silver

Specifications subject to change without notice 4.11.2022



E-SWITCH®

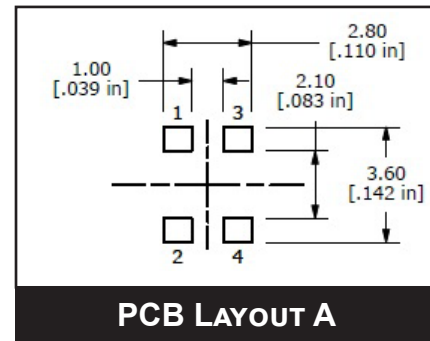
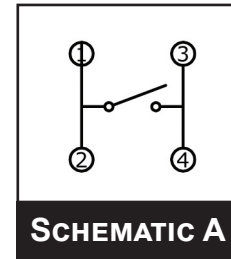
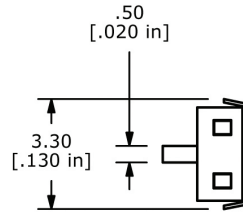
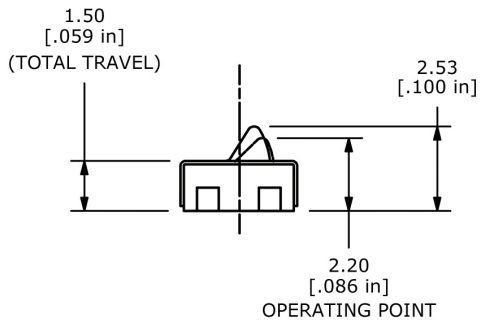
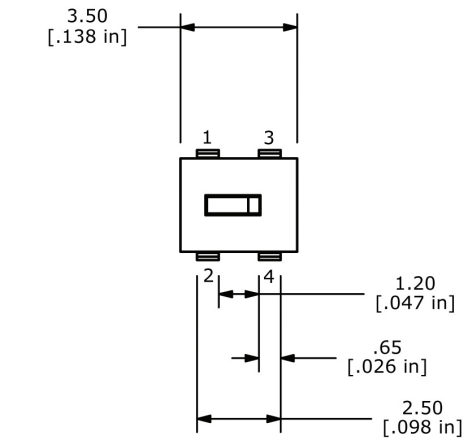
www.e-switch.com

800.867.2717

1

TD4700 SERIES DETECTOR SWITCH

A = Without Bosses



B = With Bosses

